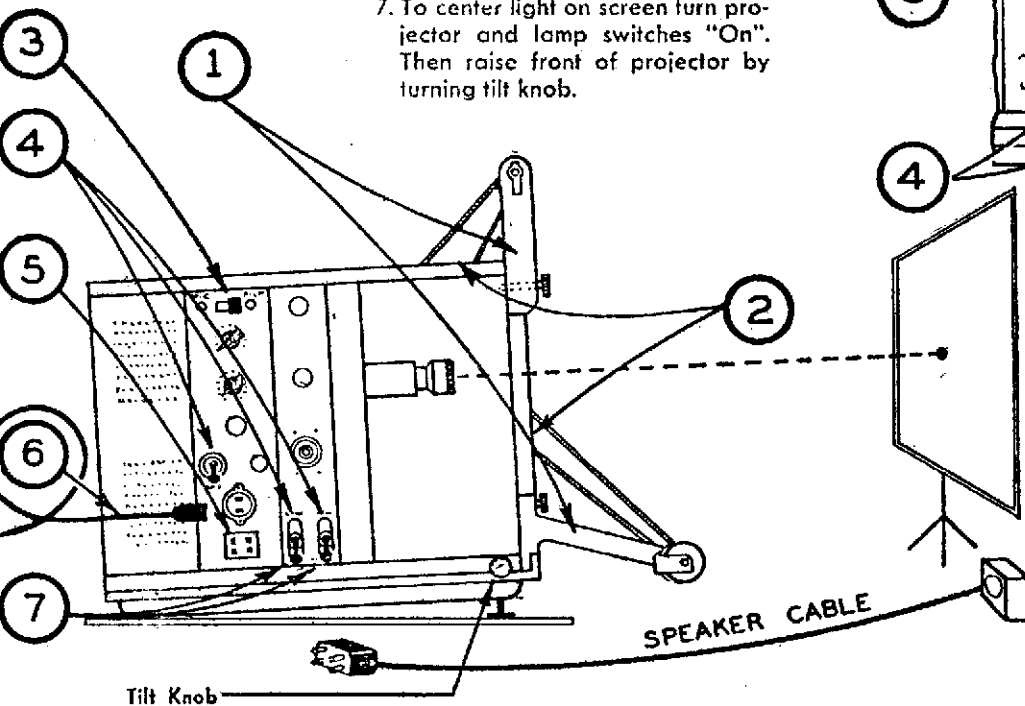


RCA THREADING

A. SET UP PROJECTOR

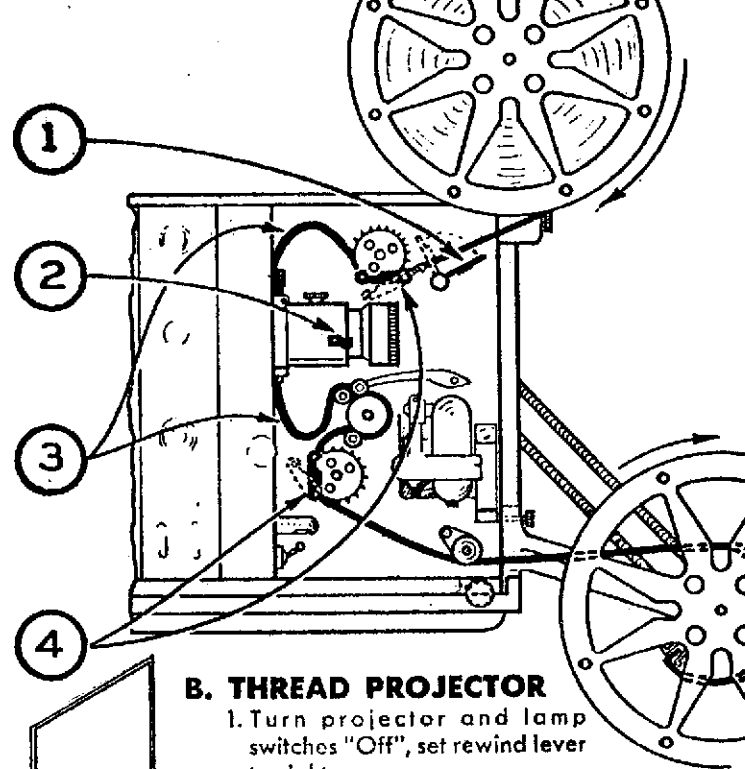
1. Attach arms (packed in speaker case) in front edge of projector by means of the thumb screws.
2. Release latch; pull spring belts out of projector case; place over pulleys.
3. Set this switch to "Film".
4. Turn these switches "Off".
5. Unreel speaker cable (packed in speaker case) and plug in here.
6. Attach power cord here. Plug free end into 110V-60 cycle A-C only.

7. To center light on screen turn projector and lamp switches "On". Then raise front of projector by turning tilt knob.



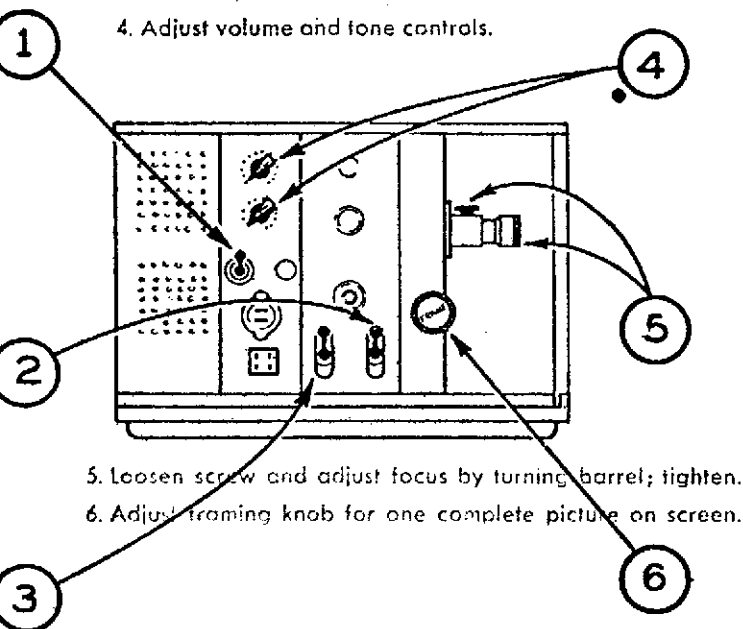
B. THREAD PROJECTOR

1. Turn projector and lamp switches "Off", set rewind lever to right.
2. Open gate by pulling out on hook; open sprocket shoes; unwind 4 feet of film; insert film as shown.
3. CAUTION: Form loops above and below the lens to follow the white guide lines closely and close gate.
4. Engage film with sprocket teeth; close sprocket shoes.



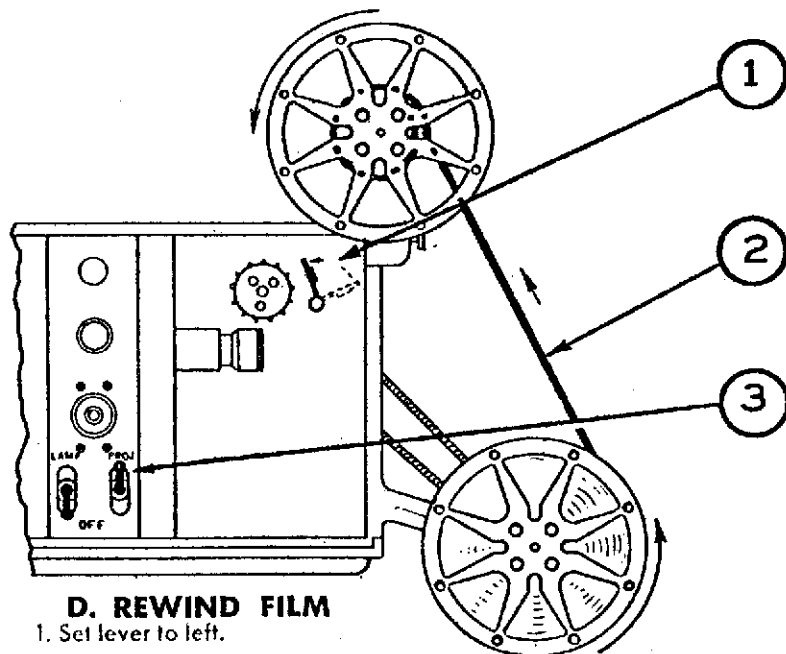
C. RUN THE SHOW

1. Turn amplifier switch "On".
2. Turn projector switch "On". Film loops must be maintained with projector running.
3. Turn lamp switch "On".
4. Adjust volume and tone controls.

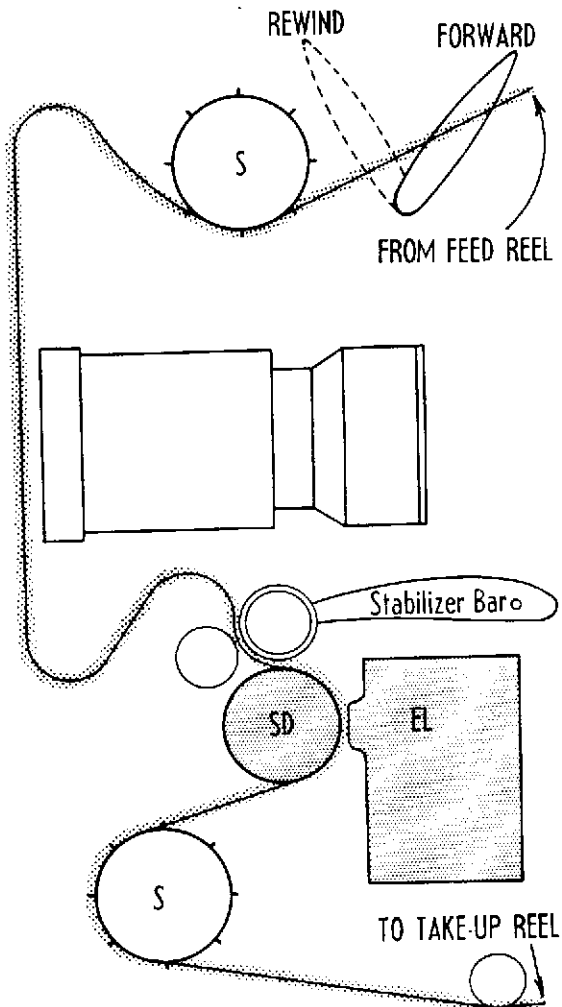


D. REWIND FILM

1. Set lever to left.
2. Thread film from bottom reel around top reel in direction shown.
3. Turn projector switch "on."



RCA MOTION PICTURE PROJECTOR



RCA Projector

400 SERIES

Some models of this machine have the speaker built into the case cover; other models have a separate speaker in a larger second case.

Because the reel arm extends from the lower front of the machine, it is frequently necessary to use the projector on a small cart with the reel arm extending down over the front edge. With a film reel attached, the lower reel arm must extend beyond the projector support if the reel is to turn freely.

Film, when being threaded, may appear to be too loose at the sound drum but this condition will stabilize itself quickly once the film is in motion.

In **THREADING** the projector, note the following:

1. Make certain that the *Rewind-Projection switch* (at top front of projector) is *down*. Double check this; press down firmly.
2. Take extreme care in threading film over the sprocket wheels. The sprocket clamps are spring-loaded and must be seated firmly on the film and wheels.
3. The *stabilizer bar* at the top of the sound drum is pressed *down* on the front end to thread film to sound drum.

In **REWINDING** the film, note the following:

1. Attach film from lower reel to top outside of top film reel.
2. Press Rewind-Projection switch (at top front of projector) *up*. Double check; press up firmly.
3. Turn motor on.

To return belts to the projector, hold one end of the belt firmly while pushing the other end into the projector. Eventually the belt will be "swallowed" into the machine.

